

Product Sheet

900 TUBE SLIDE

FS512



**Critical
Fall Height**
0.9m



**Total
Height**
2.1m



**Recommended
Surfacing**
31m²



**Recommended
Age**
1-10



NZS 5828:2015

ACCESS OPTIONS

- 1. Timber stair unit
- 2. Polyethylene moulded stair unit
- 3. Steel ladder
- 4. Timber ladder

POSTS

- 1. Timber
- 2. Steel Galvanised
- 3. Steel Powdercoated



Product Sheet

900 TUBE SLIDE

FS512



25 YEAR
WARRANTY

for structural
H5 timber and
galvanized
steel posts



15 YEAR
WARRANTY

for stainless
steel fasteners
and galvanized
chain



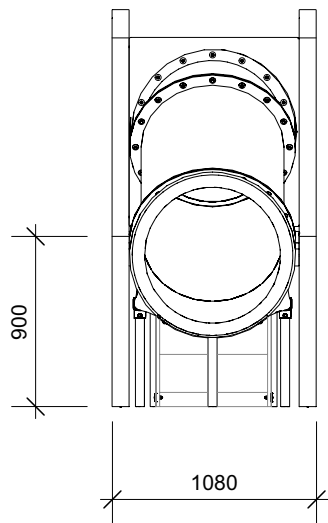
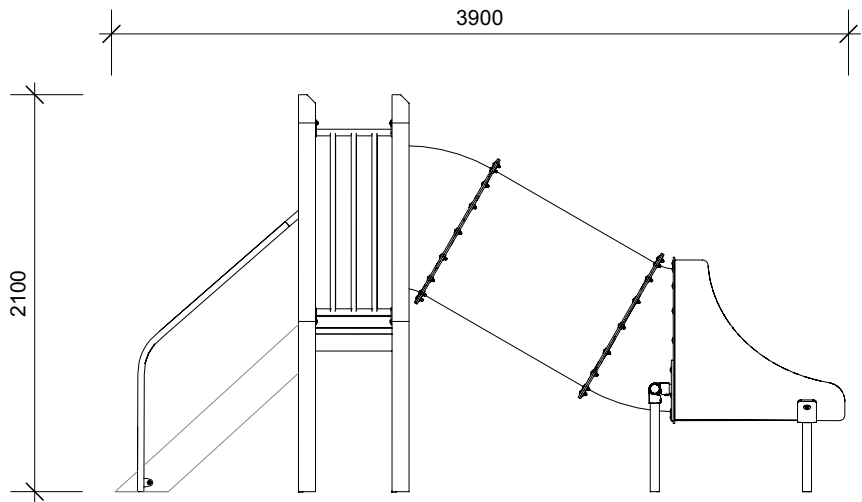
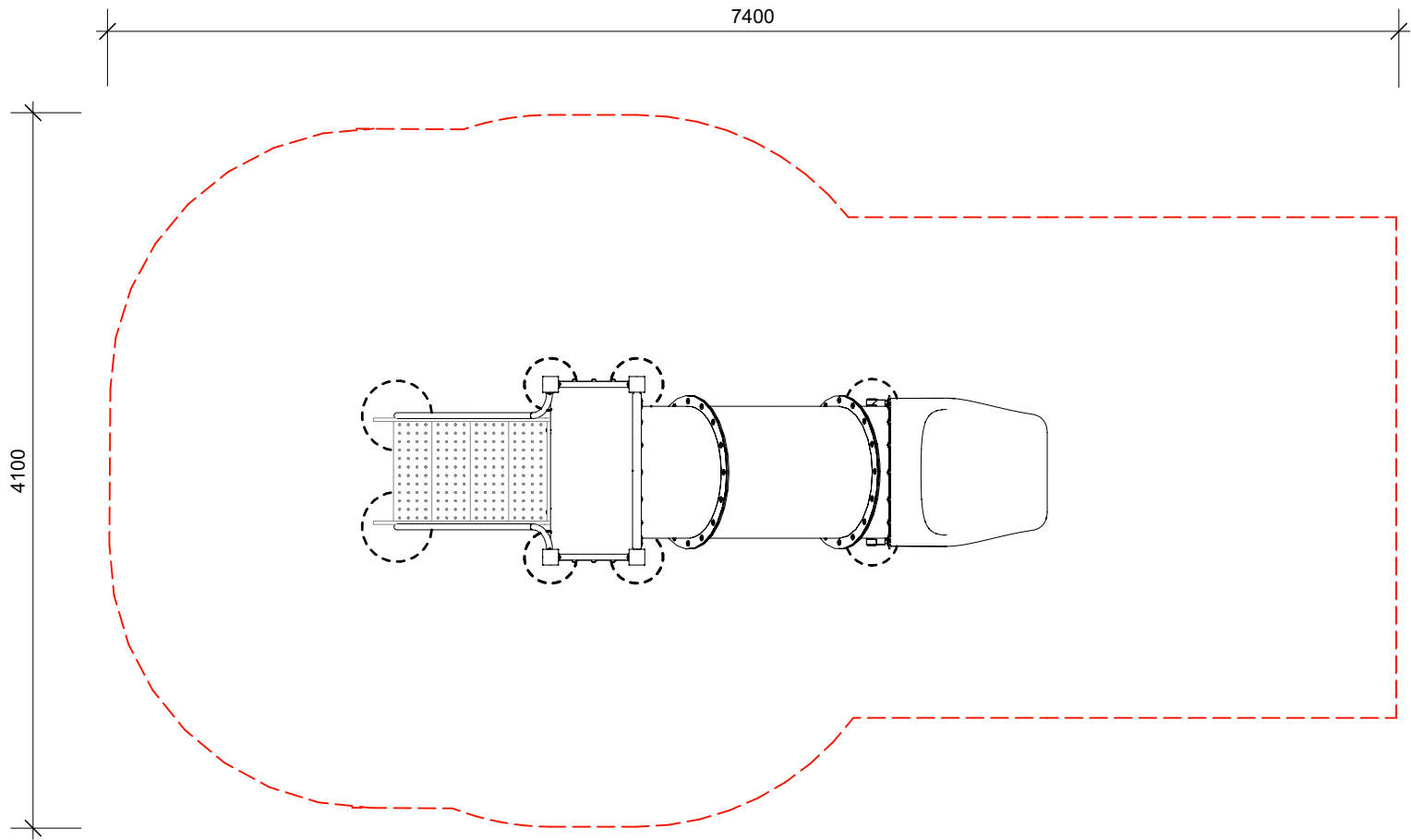
10 YEAR
WARRANTY

for the integrity of
moulded plastics,
Polyplay plastic
panels and metal
powder coating

**PRODUCT
WARRANTY**

Park Supplies & Playgrounds
warrant all products to be free
from manufacturing and
installation defects.

Disclaimer: this document should
be read in conjunction with Park
Supplies & Playgrounds full
warranty terms and conditions.



PARK SUPPLIES & PLAYGROUNDS

PO Box 59017
Mangere Bridge 2151
PH: 0800 752 947
PH: 09 527 4666
EM: SALES@PARKSUPPLIES.CO.NZ
W: www.parksupplies.co.nz

COPYRIGHT NOTICE:

Any copying (including photocopying or electronic storage) of any part of this document without prior written consent from Park Supplies & Playgrounds is an infringement of copyright.
NOTE: Our company is continually refining and improving our products. We reserve the right to alter/modify any of our products design without prior notice. CAD drawings are INDICATIVE ONLY.
Activities are designed and manufactured in accordance with the NZS5828:2015



**PARK SUPPLIES &
PLAYGROUNDS**