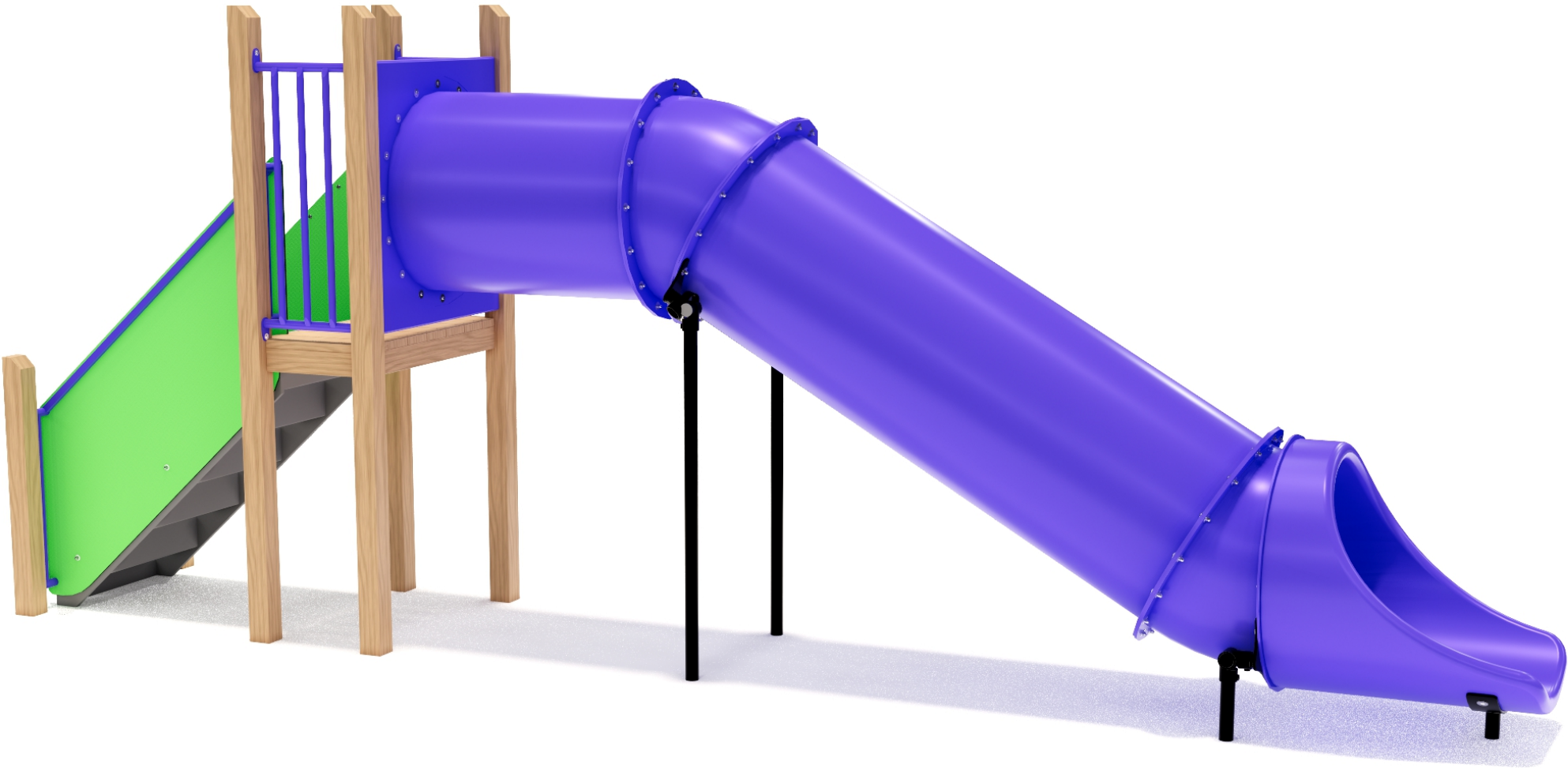


Product Sheet

1200 TUBE SLIDE

FS503



**Critical  
Fall Height**  
1.2m



**Total  
Height**  
2.4m



**Recommended  
Surfacing**  
39m<sup>2</sup>



**Recommended  
Age**  
1-15



**NZS 5828:2015**

**ACCESS OPTIONS**

- 1. Polyethylene moulded stair unit
- 2. Steel ladder
- 3. Timber ladder

**POSTS**

- 1. Timber
- 2. Galvanised Steel
- 3. Powdercoated Steel

Product Sheet

# 1200 TUBE SLIDE

FS503



**25 YEAR**  
WARRANTY

for structural  
H5 timber and  
galvanized  
steel posts



**15 YEAR**  
WARRANTY

for stainless  
steel fasteners  
and galvanized  
chain



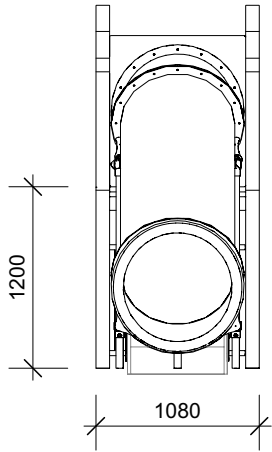
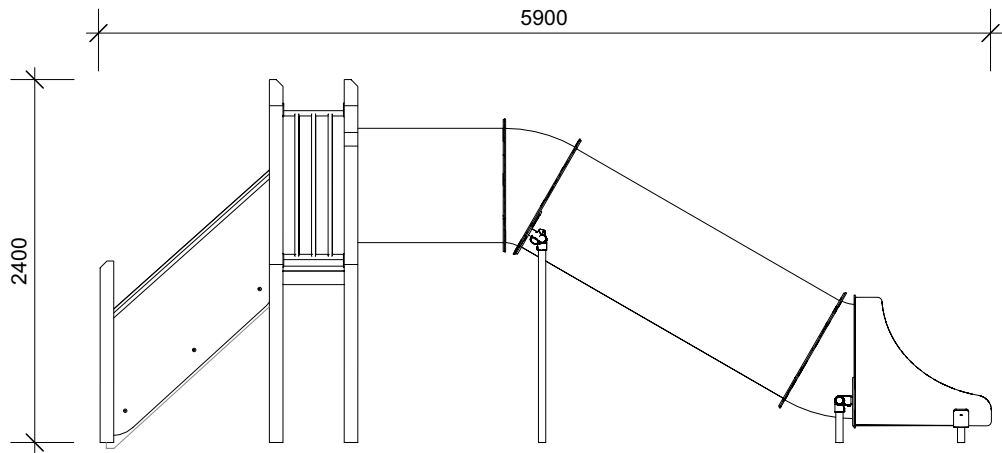
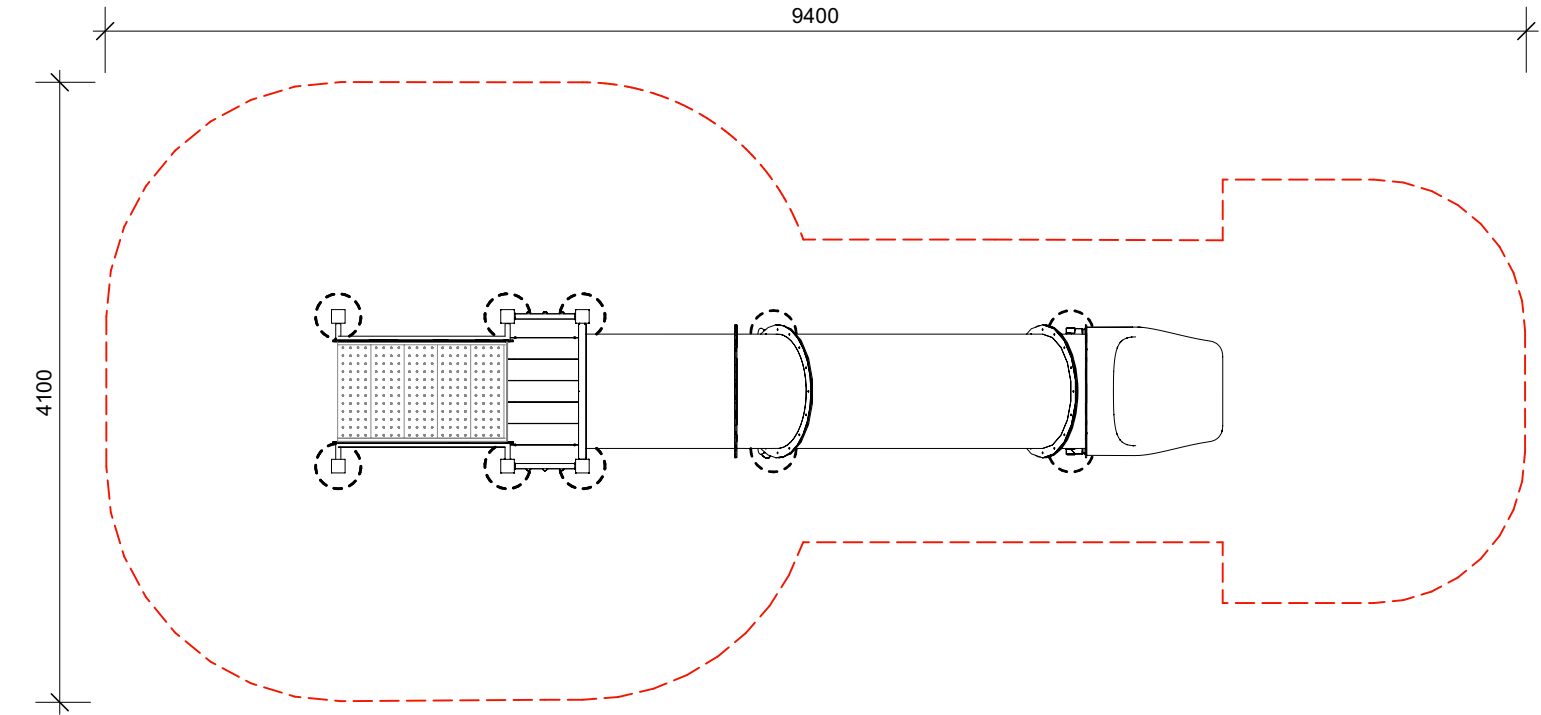
**10 YEAR**  
WARRANTY

for the integrity of  
moulded plastics,  
Polyplay plastic  
panels and metal  
powder coating

**PRODUCT  
WARRANTY**

Park Supplies & Playgrounds  
warrant all products to be free  
from manufacturing and  
installation defects.

Disclaimer: this document should  
be read in conjunction with Park  
Supplies & Playgrounds full  
warranty terms and conditions.



**PARK SUPPLIES & PLAYGROUNDS**

PO Box 59017  
Mangere Bridge 2151  
PH: 0800 752 947  
PH: 09 527 4666  
EM: SALES@PARKSUPPLIES.CO.NZ  
W: www.parksupplies.co.nz

**COPYRIGHT NOTICE:**

Any copying (including photocopying or electronic storage) of any part of this document without prior written consent from Park Supplies & Playgrounds is an infringement of copyright.  
NOTE: Our company is continually refining and improving our products. We reserve the right to alter/modify any of our products design without prior notice. CAD drawings are INDICATIVE ONLY.  
Activities are designed and manufactured in accordance with the NZS5828:2015

